



Learning Event



WORKING WITH/NEAR ROTATING EQUIPMENT

HAZARD

Physical
(Moving or rotating parts)

Dropped Object

CONSEQUENCES

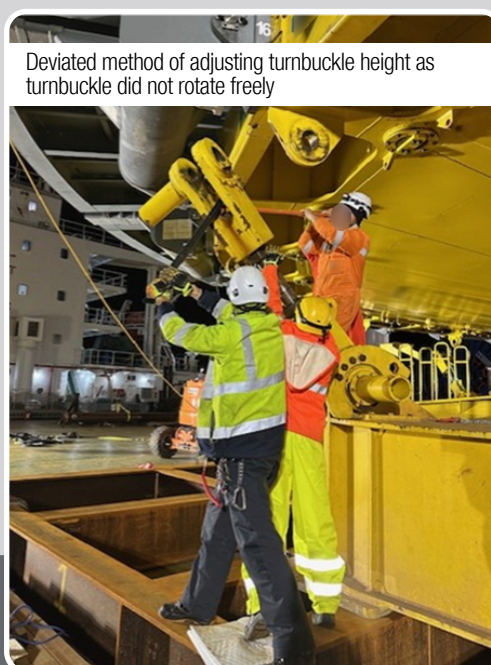
Actual: No harm to persons

Potential: This could have caused a fatality

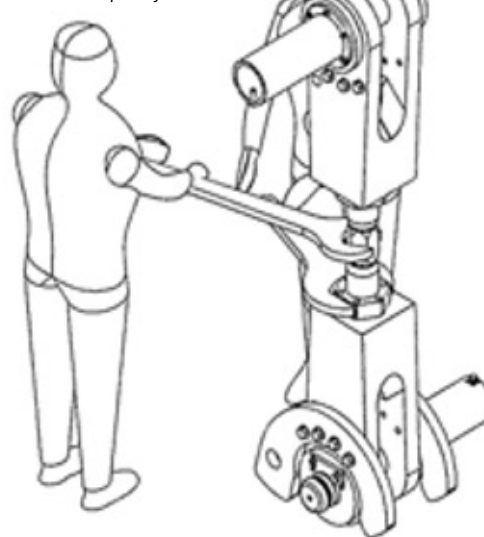
WHAT ARE YOU DOING TO ASSURE THAT EQUIPMENT IS ADEQUATELY MAINTAINED TO ENSURE THAT ALL COMPONENTS FUNCTION CORRECTLY AND REMOVE THE NEED FOR IMPROVISED METHODS?

What Happened?

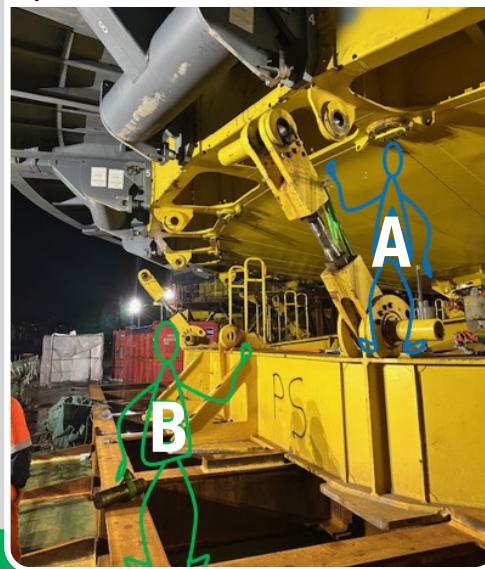
A carousel sea fastening turnbuckle height needed to be adjusted to align with the padeye. The bottom section of the turnbuckle was not rotating freely. Crew deviated from instructions by lowering the turnbuckle into a 60 degree resting position and rotating the top section, instead of rotating the centre section in the upright position. When the stop section was rotated, a 38kg pin was dislodged from its housing and fell 3.4m missing someone by about 400mm.



Carousel handbook instructions were inadequately reviewed



38kg pin dropped 3.4m and missed person 'B' by ~400mm



Why did it Happen?

- Maintenance was insufficient as the turnbuckles did not rotate as designed.
- Instructions for this task were insufficiently detailed and inadequately cascaded to the crew.
- The deviation from instructions was inadequately risk assessed and the hazards were not identified or controlled.
- Permit and risk assessment procedures were not followed correctly.

What did they Learn?

- Identify big turnbuckles that need improved maintenance practices to ensure all components function correctly and remove the need for improvised methods.
- Ensure that the Safe Work Method Statement (SWMS) for adjusting turnbuckles incorporates clear, sequential task steps along with appropriate ergonomic considerations and preservation controls, and that safe systems of work are appropriately followed. Any deviations from established methods must undergo an appropriate risk assessment.
- Introduce a mandatory functional check of turnbuckles and locking pins before starting any sea fastening activity.

Ask yourself or your Crew:

- Do you use big turnbuckles in your work environment? Do all components function effectively? Do you need to use improvised methods to maintain big turnbuckles because the SWMS is incomplete, unclear or impractical to follow?
- Is your frontline workforce involved in reviewing the adequacy of the procedures and work instructions?
- Are the SWMSs that you use fit-for-purpose, with all task steps clearly defined?
- If you deviate from a SWMS, how do you ensure that the associated risks are adequately assessed and the hazards appropriately controlled? Do you obtain authorisation before deviating from the SWMS?

IOGP Life-Saving Rules

- ✓ Obtain authorisation before deviating from procedures
- ✓ Be positioned to avoid dropped objects
- ✓ Establish and obey barriers and exclusion zones
- ✓ Understand the permit
- ✓ Confirm that hazards are controlled and it is safe to start
- ✓ Stop and reassess if conditions change



Further information:



SCAN ME

Safer Together
Line of Fire Portal



SCAN ME

Safer Together
Assist & Assure
(Safe Work Process - Step 7)



SCAN ME

Safer Together
Marine Safety Alerts

Click here to send us your feedback

or scan the code

